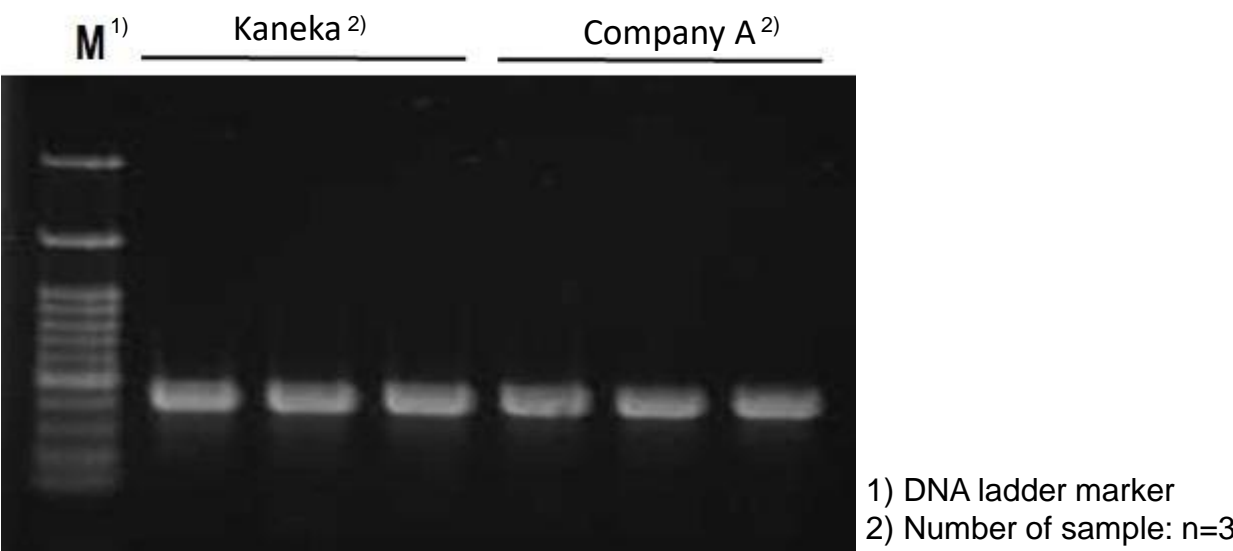
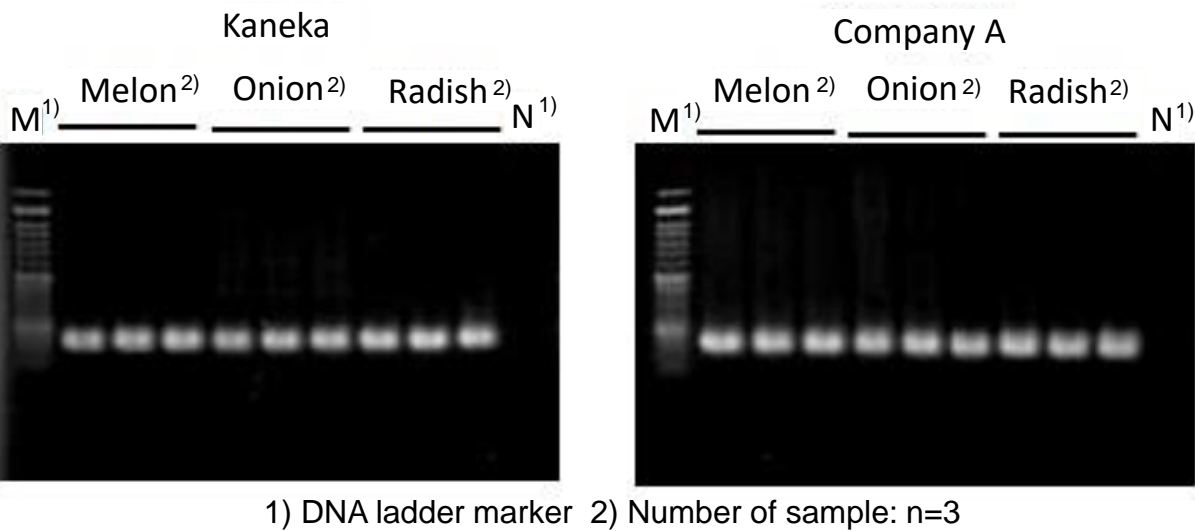


Comparison data



Extraction from mouse tail sample

DNA were extracted from mouse tail sample with Kaneka kit or Company A kit and extracted DNA samples were analyzed by end point PCR. PCR data showed the same efficiency in extraction as Company A kit (around 13 minutes protocol).



Extraction from plant seed samples

DNA were extracted from plant seed samples (Melon, Onion, or Radish) with Kaneka kit or Company A kit and extracted DNA samples were analyzed by end point PCR. PCR data showed the same efficiency in extraction Company A kit (around 80 minutes protocol).

Product Information

Bulk size kit is also available!

[Manufacturer : KNK]

Product Name	Size	Catalog #	Storage
Kaneka Easy DNA Extraction Kit Version2	1 kit	KN-T110005	RT

NOTE
✖ All products here are research use only, not for diagnostic use.
✖ Specs might be changed for improvement without notice.
✖ Company name and product name are trademark or registered mark.
✖ Please contact your local distributors for orders, quote request and inquiry.

Your Local Distributor



Bio-REV Pte. Ltd.
Block 211 Woodlands Avenue 9
#08-78/79 Woodlands Spectrum II
Singapore 738 960
TEL : +65-6555-9001
FAX : +65-6555-9030
Email: sales@bio-rev.com
Technical Support: techserv@bio-rev.com

Funakoshi Co., Ltd. (JAPAN) Phone: +81-3-5684-6296
Mail: export@funakoshi.co.jp



\Contact/ \Newsletter Signup/

KNK-2011-F03(2020.11)



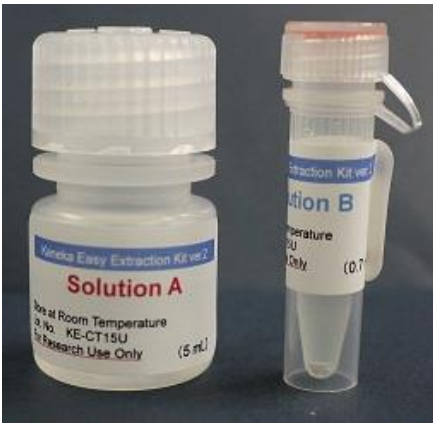
Rapid DNA Extraction around 10 minutes !!

Kaneka Easy DNA Extraction Kit Version 2 [Research Use Only]

For more information : http://www.funakoshi.co.jp/exports_contents/80099?FL

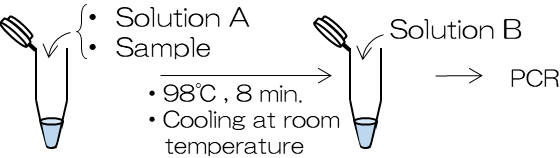
This kit enables you to extract template DNA which can be used for downstream applications such as PCR or Real time PCR.

Simple protocol makes your DNA extraction process more rapid (around 10 minutes).



Simple protocol

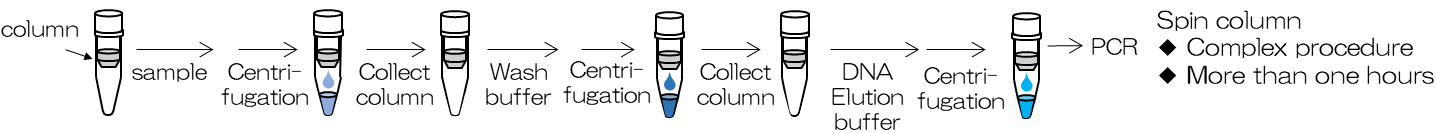
< Kaneka Easy DNA Extraction Kit version 2* >



- Simple protocol
- 10 minute extraction

*This product is for research use only.

< Example of DNA extraction >



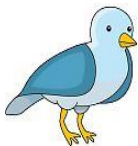
Features

- Simple protocol
- Time saving - Around 10 minutes for DNA extraction
- Room Temperature Storage
- Broad range of sample types are compatible with this kit
 - Cell lysate, Animal tissue, Plant tissue, Seed, Bacteria, Blood and Fece
- 1 kit includes 250 preps (for Blood sample) or 50 preps (for other samples) of reagents

Various applications

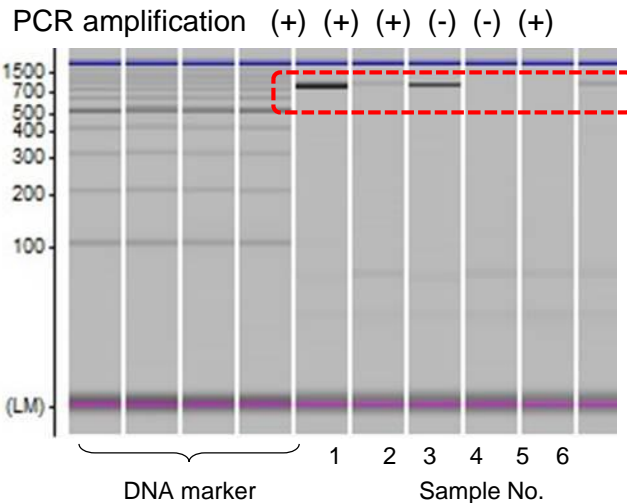
PCR data using Kaneka DNA Easy Extraction Kit version 2

Sample: Bird feces

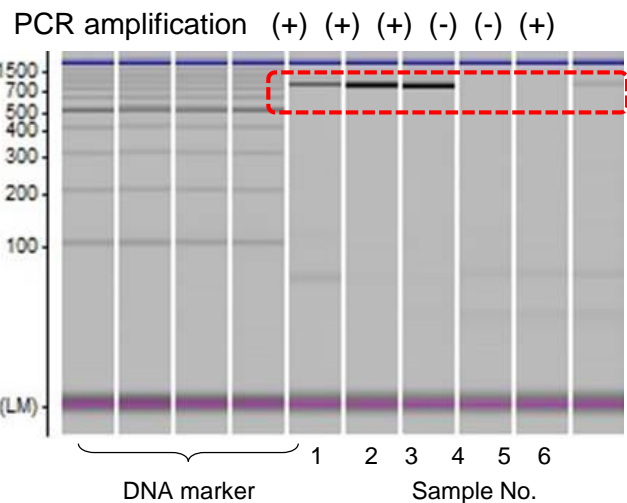


DNA was extracted well from bird feces!

Kaneka Easy DNA Extraction Kit version 2



Spin column DNA purification kit (kit A)

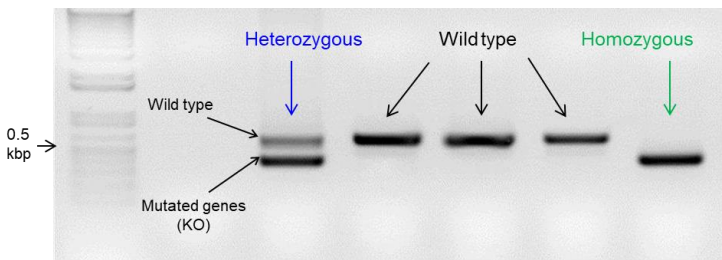


Sample: KO mouse tail

*KO: Knockout



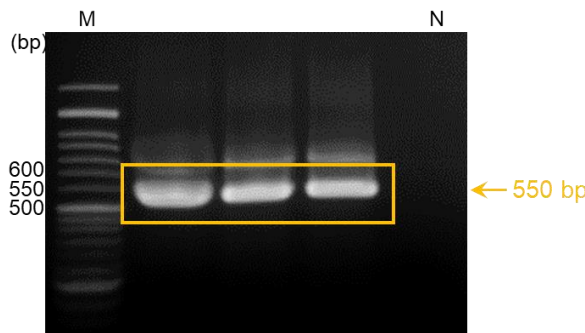
DNA was extracted well from KO mouse tails !



Sample: Fish fins



DNA was extracted well from fish fins!

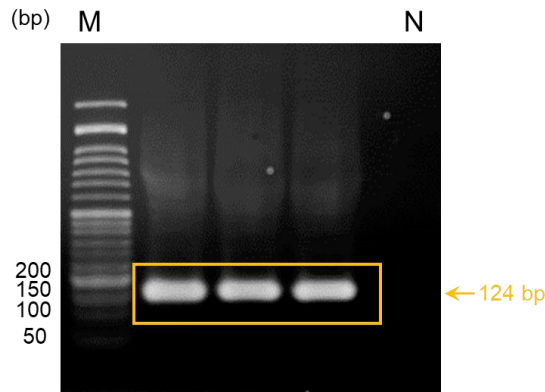


M: 50 bp DNA ladder marker
N: negative control (water)

Sample:Lettuce leaves



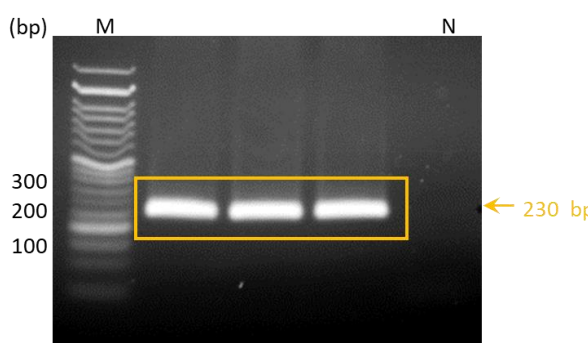
DNA was extracted well from lettuce leaves



M: 50 bp DNA ladder marker
N: negative control (water)

Sample: Candida

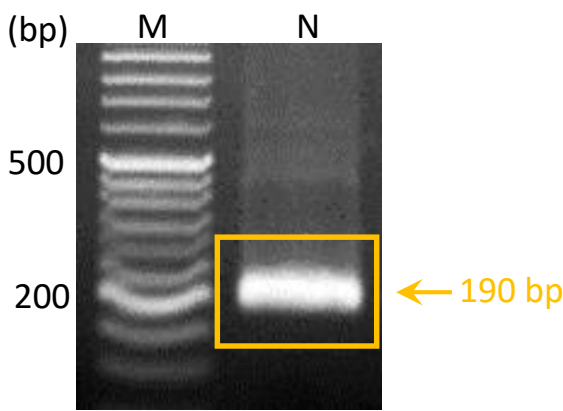
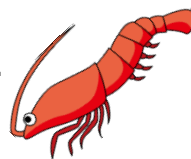
DNA was extracted well from candida



M: 50 bp DNA ladder marker
N: negative control (water)

Sample:Shrimp

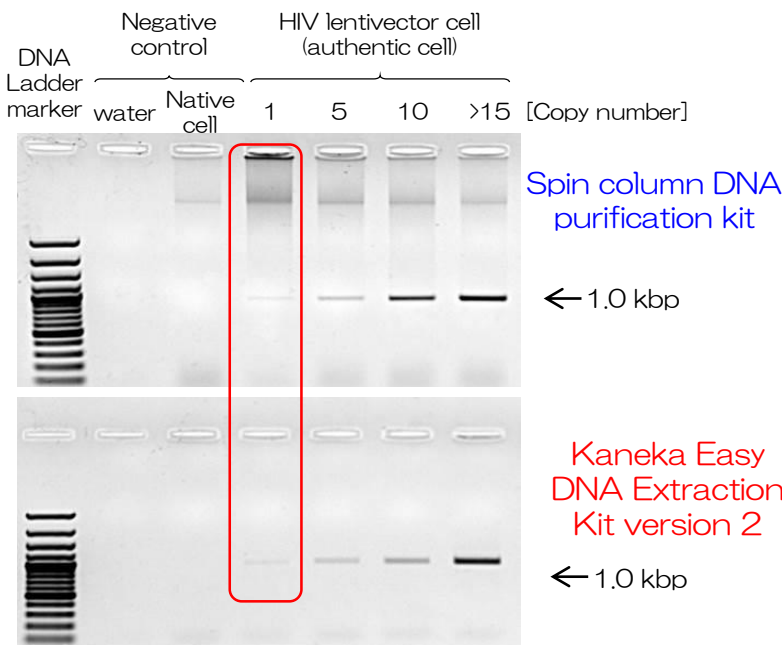
DNA was extracted well from Shrimp!



M: 50 bp DNA ladder marker
N: negative control (water)

Sample: HIV lentivector cells

DNA was extracted well from HIV lentivector cells



Other sample examples

Pichia pastoris, HEK293 cells, Plants...etc

Check! https://www.funakoshi.co.jp/exports_contents/80099?FL