

Bench-top disposal bags

Suitable for bench-top waste disposal !



<Feature>

- Material: Polyethylene
- **Autoclavable**
- Heatproof temperature: **121°C**
- Special holder is available.

Size:
22 x 28 cm

More Information :

https://www.funakoshi.co.jp/exports_contents/81484



funakoshi
FRONTIERS IN LIFE SCIENCE

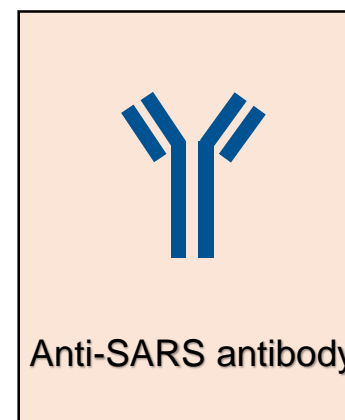
www.funakoshi.co.jp/exports
Research Use Only



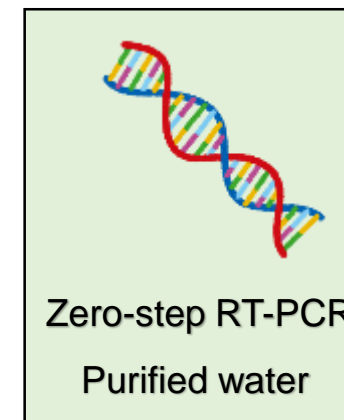
Our tools for COVID-19 research

For COVID-19 research

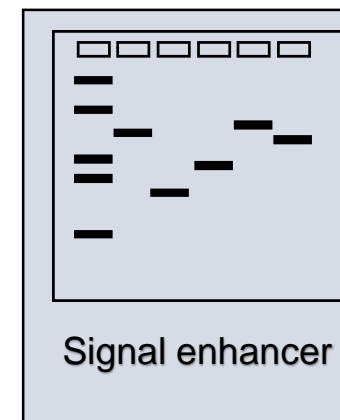
Antibody



PCR



WB/ELISA



Miscellaneous



Double layer autoclave bag

Safe and durable!

This autoclave bag is used as a laboratory waste disposal with safer features.

<Features>

- Safety specification: Double layer bag (outer: Polypropylene, inner: Polyethylene)
- Heatproof temperature: **130 °C**

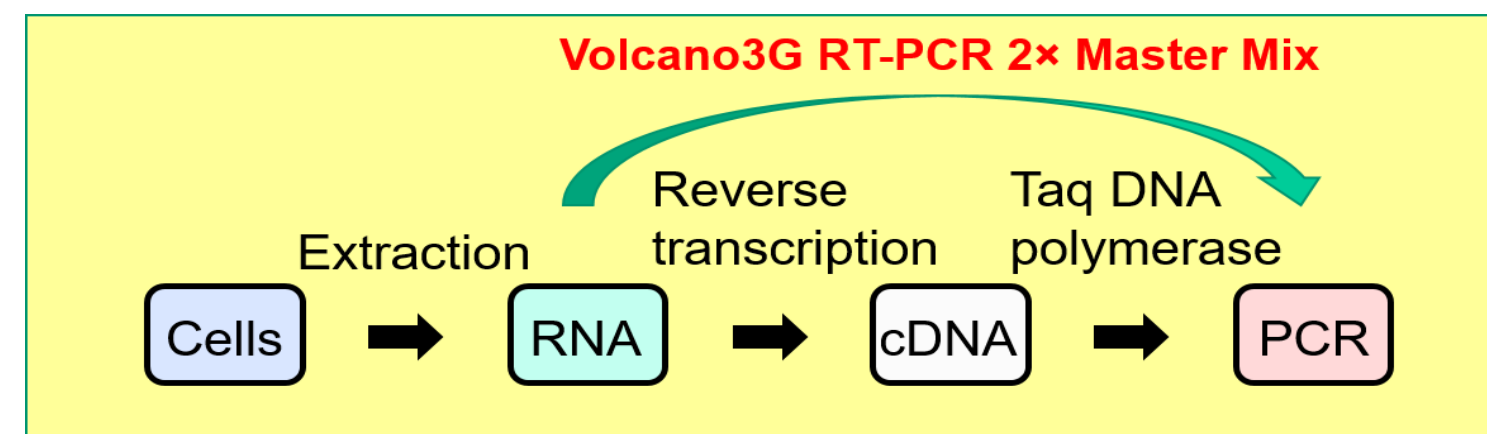
More Information :

https://www.funakoshi.co.jp/exports_contents/81429



Volcano3G RT-PCR 2x Master Mix

Easy RT-PCR Master Mix with zero-step protocol.



Volcano3G RT-PCR master mix enables the amplification of RNA or DNA target sequences with quick and easy zero-step PCR protocol. This has been **successfully used for Coronavirus (SARS-CoV-2, COVID-19) detections** by several different researchers.

More Information :

https://www.funakoshi.co.jp/exports_contents/81467



NOTE

※ All products here are research use only, not for diagnostic use.
※ Specs might be changed for improvement without notice.
※ Numbers after “#” represents product code.

※ Company name and product name are trademark or registered mark.
※ Please contact your local distributors for orders, quote request and inquiry.

Your Local Distributor



Bio-REV Pte. Ltd.

Block 211 Woodlands Avenue 9
#08-78/79 Woodlands Spectrum II
Singapore 738 960
TEL : +65-6555-9001
FAX : +65-6555-9030
Email: sales@bio-rev.com
Technical Support: techserv@bio-rev.com

Funakoshi Co., Ltd.

Address: 9-7 Hongo 2-Chome, Bunkyo-ku,
Tokyo 113-0033 JAPAN
Phone : +81-3-5684-6296
Fax : +81-3-5684-6297
Email : export@funakoshi.co.jp

FUN-2005-F06 (2020.05)

Ice On

Tube Cooler Rack made of Aluminum

"Ice-On" is a tube stand which cools samples quickly compared to placing onto ice directly.

<Features>

- Reduce contamination risk compared with tube samples placed directly on ice.
- Two configurations: Type I & Type II
- Made of Aluminum.
- Compact Size
- Stackable



More Information :

https://www.funakoshi.co.jp/exports_contents/80502



Signal Booster Series

Signal Enhancer for IHC, Western Blot and ELISA

"Signal Booster series" are signal enhancement reagents for immunoassays. The main composition of Signal Booster series are polymer and blocking ingredients. Polymer allows antigen and antibody enhance the contact frequency and specific binding. Combination of polymer and blocking ingredients will give higher signal with lower background.



<Features>

- Stronger signal and lower background
- Can be used for IHC, Western Blot, ELISA, etc.

More Information :

https://www.funakoshi.co.jp/exports_contents/46147



Water, RNase-free, Non-DEPC Treated



For PCR, RT-PCR and qPCR

RNase-free Water is suitable for RNA research such as PCR, RT-PCR, and qPCR. BDL's Non-DEPC-Treated water is prepared by ultrafiltration from purified water without DEPC treatment.

<Features>

- **Low inhibition for enzyme reaction:** Due to the residual DEPC may inhibit enzyme reaction, it is recommended for PCR, RT-PCR, and qPCR.
- **Purified water:** This is processed with ultrafiltration through a hollow fiber membrane.
- DNase-free and RNase-free

More Information :

https://www.funakoshi.co.jp/exports_contents/80613



Anti-SARS spike glycoprotein antibody (clone 3A2)

Anti-SARS spike glycoprotein antibody (clone 3A2) specifically reacts with SARS spike glycoprotein.

This antibody does not cross-react with SARS-CoV-2 and MERS-CoV.

Applications:

WB, Immunofluorescence staining, Flow Cytometry, Neutralization, ELISA

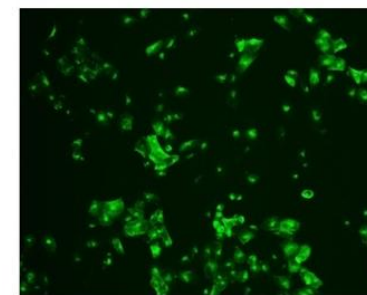


Fig.1 SARS infected cells were stained by clone 3A2.

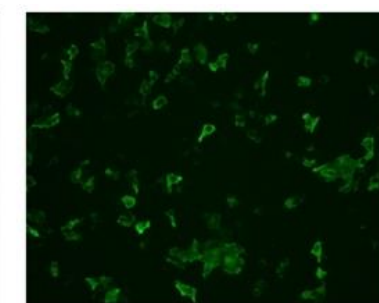
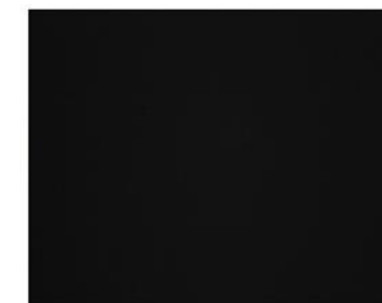


Fig.2 SARS-CoV-2 infected cells were stained by clone 3A2 (Left) or positive control antibody (Right).

Clone 3A2 does not react with SARS-CoV-2 infected cells.

More Information :

https://www.funakoshi.co.jp/exports_contents/160197

