

# AllView PAGE Buffer

**NEW!**

For more information : [https://www.funakoshi.co.jp/exports\\_contents/81387](https://www.funakoshi.co.jp/exports_contents/81387)

## Say "goodbye" to gradient gel !!

AllView PAGE Buffer can widely separate proteins during SDS-PAGE.

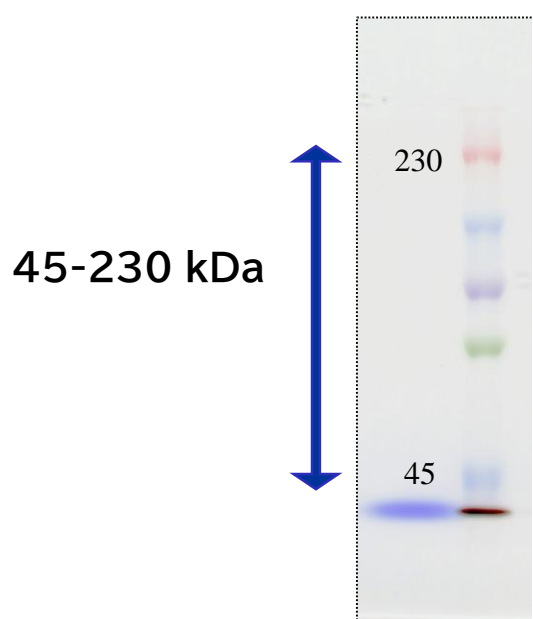
### SDS-PAGE

**AllView**  
PAGE Buffer

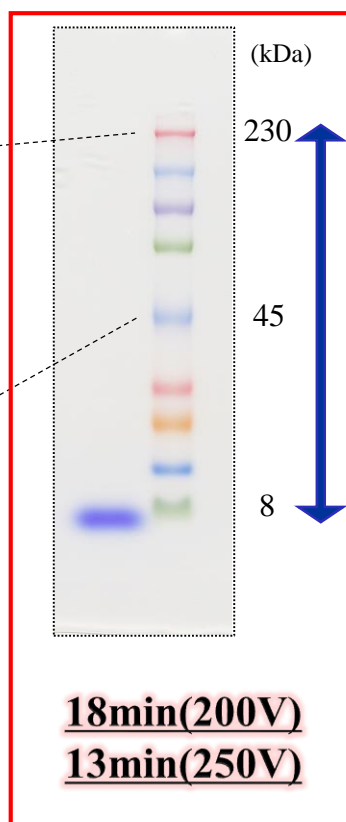
Normal SDS-PAGE Buffer

**VS**

AllView PAGE Buffer



40-60min(200V)



18min(200V)  
13min(250V)



8-230 kDa

*Widely separated!*

*So speedy!*


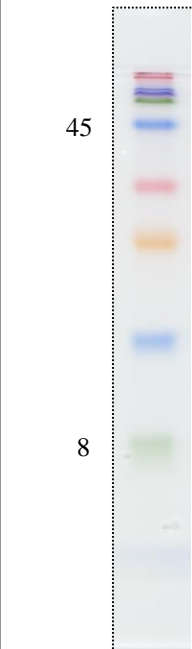


- Gel: 6% polyacrylamide (5% C)
- Sample: DynaMarker Protein MultiColor Stable II, Code #DM660

Fig. SDS-PAGE by using "Normal SDS-PAGE Buffer" or "AllView PAGE Buffer" was performed. AllView PAGE Buffer widely separates proteins like gradient gel.

## Features

- **Save cost and time: gradient gel is not needed!**
- It takes **only 13min** to complete electrophoresis by mini gel size.
- Applicable to further assays: CBB staining, Western blot and etc...

## Comparison

Gel type	Normal gel		Gradient gel	Normal gel
Gel concentration	Low (6%)	High (15%)	4-20%	6%
Buffer	Conventional SDS-PAGE buffer (Tris-Glycine-SDS : Laemmli)			<b>AllView PAGE Buffer</b>
Time (mini gel size)	40-60min (200V)	40-60min (200V)	30-60min (200V)	18min (200V) 13min (250V)
Pictures				

Using normal gel during SDS-page, the separation range of protein is generally limited.  
However, using AllView PAGE Buffer, the separation range surprisingly extends like gradient gel.

## Product Information

[ Manufacturer : BDL ]

Product Name	Code	Size	Storage
AllView PAGE Buffer	DS520	500 mL (20x solution)	RT

NOTE

- ※ All products here are research use only, not for diagnostic use.
- ※ Specs might be changed for improvement without notice.
- ※ Numbers after “#” represents product code.

- ※ Company name and product name are trademark or registered mark.
- ※ Please contact your local distributors for orders, quote request and inquiry.

Your Local Distributor



**Bio-REV Pte. Ltd.**

Block 211 Woodlands Avenue 9  
#08-78/79 Woodlands Spectrum II  
Singapore 738 960  
TEL : +65-6555-9001  
FAX : +65-6555-9030  
Email: sales@bio-rev.com  
Technical Support: techserv@bio-rev.com

**Funakoshi Co., Ltd.**

Address: 9-7 Hongo 2-Chome, Bunkyo-ku,  
Tokyo 113-0033 JAPAN  
Phone : +81-3-5684-6296  
Fax : +81-3-5684-6297  
Email : export@funakoshi.co.jp

BDL-1907-F10 (2019.10)